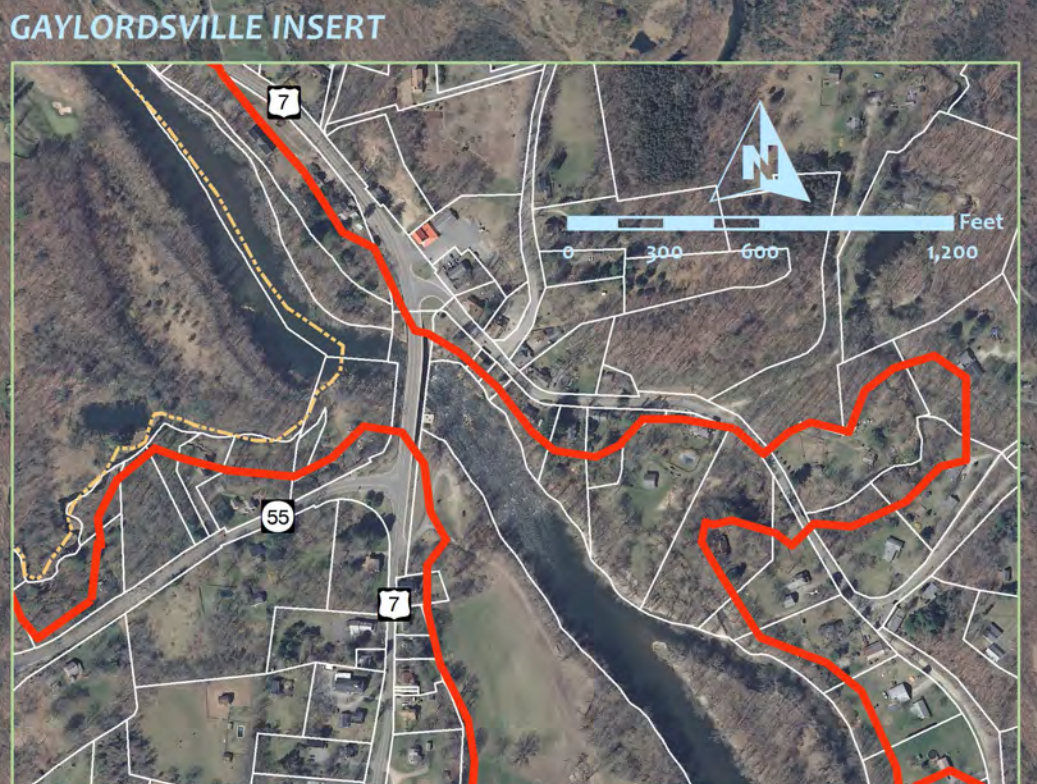
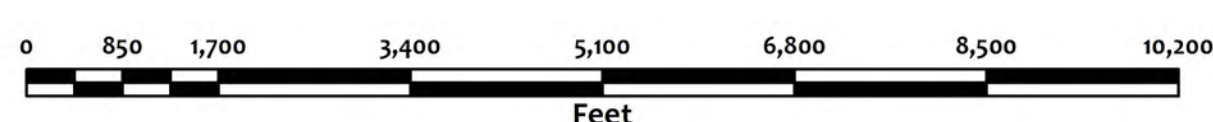


Housatonic River Overlay Zone (HROZ)
 June, 2015
 Town of New Milford



map components

- municipal boundary
- Inner Corridor Boundary
- parcel boundary, 2014
- Outer Corridor Boundary
- 2012 aerial photo



NOTES:
 1) The factors determining the bounding lines of the Inner & Outer Corridors remain unchanged and are depicted as originally adopted.
 Definitions of these lines are as follows:
 - The Outer Corridor is the portion of the river valley that is unincorporated lying between the Inner Corridor and the top of the river valley ridge, delineated by lines drawn from peak to peak along ridge lines.
 - The Inner Corridor consists of the river channel and the FEMA 100 year flood hazard area, whichever is greater.
 2) The Inner Corridor is revised to follow the updated boundary line as depicted & shown in the 2008 Housatonic River Management Plan.
 3) This map was created by Northwest Conservation Districts and is intended for general planning purposes only. This document shall not be used as a substitute for on-the-ground field verification.
 CT DEEP, CT&O, NCD & Town of New Milford may have supplied portions of these data.
 *The Inner Corridor line was created and supplied by Dodson & Fisher (then Dodson Associates, Ltd.), see 2008 Housatonic River Management Plan Report.
 file name: mtn_NM_HROZarea_v1.pdf
 map produced: June 5, 2015

